



Ready To Use PCR Reagents

AVIAN *Chlamydophila psittaci*

Cat. No. 60ACP100

INSTRUCTION MANUAL

I. Intended Use

ACP PCR Ready to Use PCR Reagents are intended for Avian *Chlamydophila psittaci* amplifications. All reagents are ready to use for a successful amplification, from DNA extraction to obtaining PCR products suitable for loading onto Agarose gel.

II. General Information

Each package contains **Rapid One Step Extraction Buffer** (Tube A), which is intended for use with fresh or dry blood samples. The extraction step yields appropriate amount of crude DNA needed for a successful amplification of ACP via PCR. No purification is needed! Tubes B, C and D are the components for subsequent use in PCR amplification. Tube B contains **ACP-PCR mix**, Tube C contains **ACP Activation Buffer** and Tube D contains the **Positive Control**. The **Extraction Buffer** (Tube A) also serves as **Negative Control**. Also included are **Tissue/Swab Extraction Buffer** (Tube E) and **Tissue/Swab Neutralization Buffer** (Tube F). Each PCR set up should include 3 reaction vials; each vial should be added with: **5µl ACP-PCR mix**, **10µl ACP Activation Buffer** and **5µl DNA product of the Extraction step / Positive Control/ Negative Control**. Following the addition and mixing of all the above ingredients, the reaction vials are placed in thermal cycler for amplification according to the program detailed in the Step by Step chapter (see section VIII). At the end of the program the product should be visualized on 1.5% Agarose gel, yielding a **350/480/730bp** bands.

III. Description Of The Disease

Chlamydophila psittaci, an obligate, intracellular, gram-negative bacterium, with 7 known genotypes, can be transmitted to humans and cause psittacosis or parrot fever. Genotypes are distinguished by sequencing of the outer membrane protein A (*ompA*) gene or by a recently developed real-time PCR. *C. psittaci* can infect 465 avian species in 30 avian orders, with at least 153 species in the order Psittaciformes. Clinical signs in birds are associated with liver damage, respiratory discharges and fever.

IV. Diagnosis Of The Disease

The polymerase chain reaction (PCR) assay was developed to detect *Chlamydophila psittaci* DNA in blood, feces and tissue specimens sampled from avian species. The test is very useful when applied with dried blood samples. Other diagnostic methods include ELISA, which is less sensitive than PCR and, bacterial isolation which takes long time to process. The primers were designed to amplify a 480bp product derived from part of the 16S gene. The test is very useful when applied to samples from small birds suspected of being in contact to human psittacosis.

V. Contents (Sufficient for 48 tests)

Tube A	Rapid One Step Blood Extraction Buffer
Tube B	ACP-PCR mix (Green cap)
Tube C	Specific ACP Activation Buffer (Blue cap)
Tube D	Specific ACP Positive Control (Red cap)
Tube E	Tissue/Swab Extraction Buffer
Tube F	Tissue/Swab Neutralization Buffer
	ACP Instruction Manual

VI. Essentials Not Included

RNAase free PCR reaction vials.
PCR Thermo-Cycler.
5-10µ, 100µl Pipettes and filter tips.
Micro-centrifuge.
Heating bath or heating block.
Agarose, DNA size marker.
Microwave for Agarose casting.
Horizontal Mini-Electrophoresis chamber, Comb and power pack.
TBE /TAE Buffer and Ethidium Bromide (EB).
UV Transilluminator (254nm for EB).
A pair of sterile scissors.
A cutter (for swab application).

VII. Storage And Handling

- Store at 4°C for 6 months or at -20°C for two years.
- Use gloves and maintain clean working conditions.
- Avoid spillage and cross contamination of solutions.
- Change tips between reagents and between reaction vials.
- Disinfect scissors before and after each cutting of blood filters.
- Do not mix reagents from different batches.
- Always treat samples with precaution, and dispose as biological material.
- Remember that Ethidium Bromide is hazardous, and use the UV transilluminator carefully.
- It is recommended to incinerate the contents after use.

Developed by Karnieli Ltd.

VIII. Step By Step Protocol

Blood Extraction:

(1) Into an empty clean vial, add **100µl of Rapid OneStep Blood Extraction Buffer (Tube A)** for **every 5µl** of fresh blood sample or approximately 3/5 mm² piece of Whatman/tissue paper soaked with blood. Make sure the piece of paper is submerged underneath the extraction buffer.

(2) Incubate samples at **50°C** for **10 minutes** followed by a subsequent **95°C** for additional **10 minutes**.

(3) Centrifuge sample at **>10,000 rpm** for **1 minute** to allow the paper and cell debris to pellet. The extracted DNA product is in the liquid phase, ready to be used for PCR.

Tissue/Swab Extraction:

(1) Into a clean 1.5 ml vial add **300µl of Tissue/Swab Extraction Buffer (Tube E)**.

(2) Carefully cut the agar-free swab close to its cotton edge and insert it into the vial. The swab should fit entirely inside the vial, must be covered with buffer and the cap should close easily.

(3) Incubate the swab within buffer **E** for **10 minutes at 95°C**.

(4) Add **300µl of Tissue/Swab Neutralization Buffer (Tube F)** and the product will be ready for PCR use.

Extracted DNA product (of any source)* may be applied immediately for PCR or stored for a few days at 4°C / several months at -20°C. Please mark the vial properly for future identification.

* Note: **The reagents have been adjusted for use with crude DNA extraction to enable better sensitivity (with less handling).**

PCR Procedure:

(1) Into a clean reaction vial add: **5µl ACP-PCR mix (Tube B)**, **5µl of the Extracted DNA product** and **10µl of the specific ACP-Activation Buffer (Tube C)**. Mark each reaction vial properly to avoid mistakes.

(2) Into a second clean reaction vial add **5µl ACP-PCR mix (Tube B)**, **5µl of the Positive Control (Tube D)** and **10µl of the specific ACP Activation Buffer (Tube C)**. Mark this vial as Positive Control reaction.

(3) Into a third clean reaction vial add **5µl ACP-PCR mix (Tube B)**, **5µl of the Extraction Buffer (Tube A)** and **10µl of the specific ACP Activation Buffer (Tube C)**. Mark this vial as **Negative Control** reaction.

(4) Gently mix each reaction vial (do not vortex!) and place in the thermal cycler for amplification.

PCR Program:

A. **95°C for 2 minutes**

38 cycles of:

B. **94°C for 30 seconds**

C. **56°C for 30 seconds**

D. **72°C for 30 seconds**

End cycles

E. **72°C for 2 minutes**

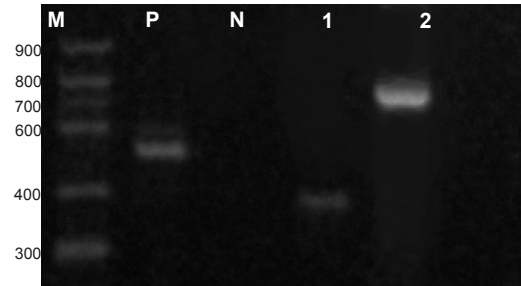
F. **Stop at 8°C**

(5) If not used immediately, store PCR products at 4°C until application on Agarose

IX. Reading And Interpreting The Results

- Visualize PCR products on 1.5% Agarose gel, along with a size marker (**see Fig. 1**).
- Mark each well and load the whole content of each reaction vial into the relevant wells.
- The Positive Control should yield a single band at **480bp**.
- No band should be detected at the Negative Control lane.
- The expected product should yield a **350/480 and or 730 bp** band(s).

Fig. 1 - Visualization of the PCR product.



Lanes: M Size Marker, P Positive Control, N Negative Control
Lanes 1 - 2 are test samples positive for ACP.

X. Limitations And Troubleshooting

- For *in vitro* use only. Do not use internally or externally in humans or animals.
- A false positive result may occur, even if precaution has been taken. To eliminate inconclusive results, always use the Negative Control in each PCR set.
- Blood samples testing will detect carriers as well.

XI. References

- Harkinezhad T et al. (2007) *Chlamydomphila psittaci* genotype E/B transmission from African grey parrots to humans. J Med Microbiol. 56(Pt 8):1097-100.
- Hewinson RG et al. (1997) Detection of *Chlamydia psittaci* DNA in avian clinical samples by polymerase chain reaction. Vet Microbiol. 54(2):155-66.
- McElnea CL & Cross GM (1999) Methods of detection of *Chlamydia psittaci* in domesticated and wild birds. Aust Vet J. 77(8):516-21.
- Pearson JE et al. (1989) Isolation and identification of *Chlamydia psittaci* from pet birds. J Am Vet Med Assoc. 1;195(11):1564-7.
- Sareyyupoglu B et al. (2007) *Chlamydomphila psittaci* DNA detection in the feces of cage birds. Zoonoses Public Health 54(6-7):237-42.
- Vanrompay D et al. (2007) *Chlamydomphila psittaci* transmission from pet birds to humans. Emerg Infect Dis.13(7):1108-10.

For further information and assistance please contact your local distributor or Biogal Galed Labs. Directly by e-mail: info@biogal.co.il or by tel: 972-4-9898605 / fax: 972-4-9898690.